

uMngeni Ecological Infrastructure Partnership (UEIP) – UPDATE

Support to the Continuation of the Reconciliation Strategy of
the KwaZulu-Natal Coastal Metropolitan Area: Phase 2

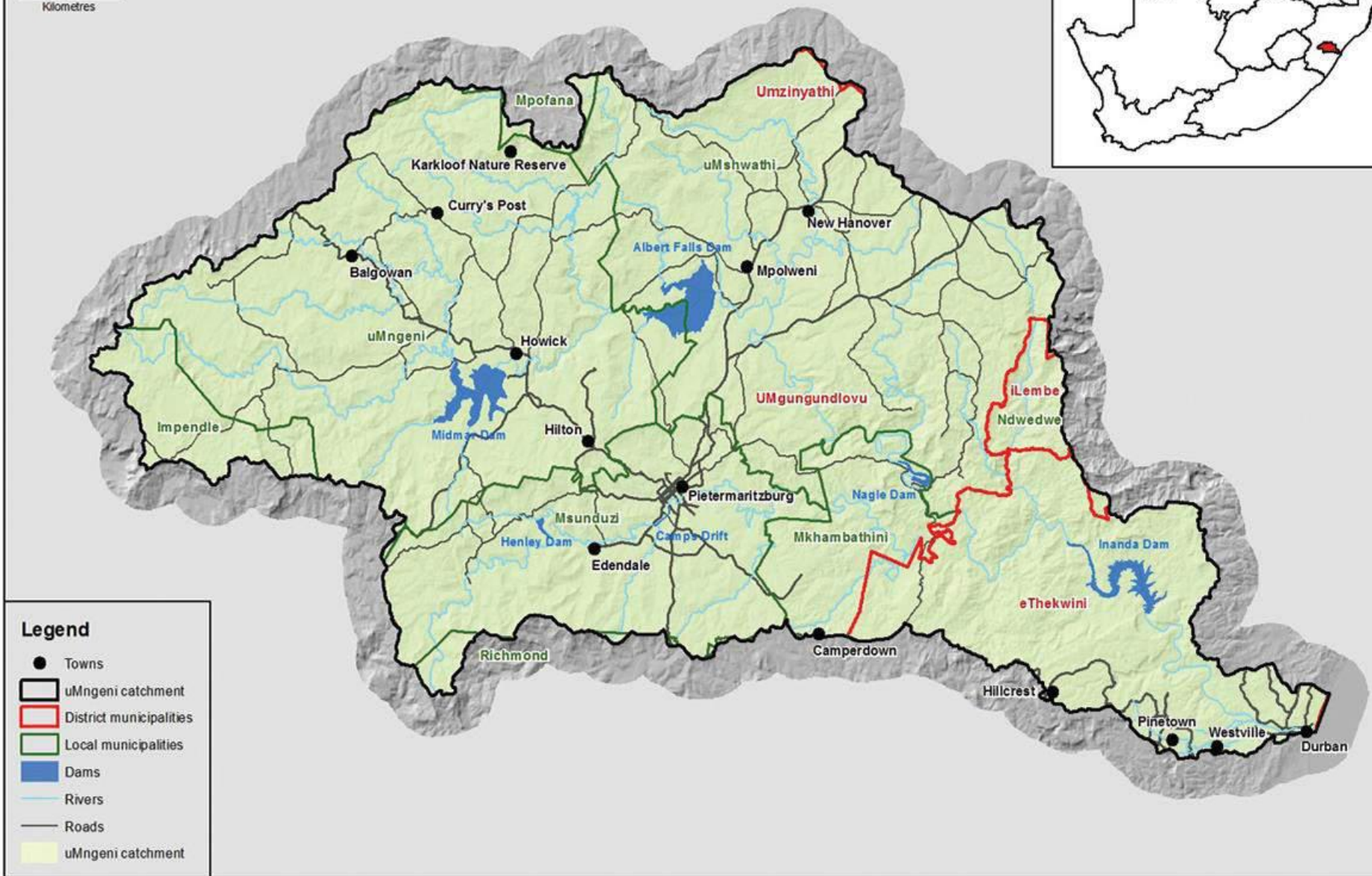
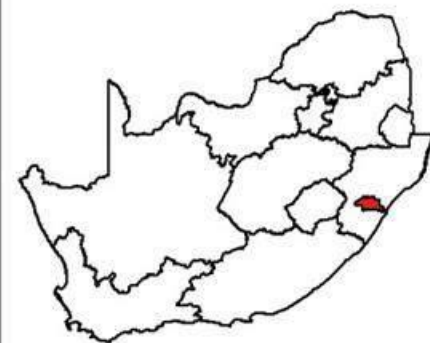
Strategy Steering Committee – Meeting 10

30 August 2016

Pearl Gola
UEIP Co-ordinator



0 5 10
Kilometres



IMPORTANCE OF THE CATCHMENT

- Economically important
- Recreation activities



- Stressed catchment

UEIP FOCUS

- Include investment in ecological infrastructure to supplement built infrastructure in decision-making and policy development.



FAILING BUILT INFRASTRUCTURE

Spilling manholes



Clean drinking water leakages



OTHER ISSUES

Solid waste management



Drought impacts



WATER QUALITY DRIVERS

- Intensive agriculture
- Informal settlements
- Rural settlements
- Water abstractions
- Failing sewerage systems
- Illegal effluent discharges

WATER QUALITY IMPACTS

High nutrient loads



High bacterial loads (*E. coli*)



Photos: Mark Graham (GroundTruth Water, Wetlands and Environmental Engineering)

RESEARCH

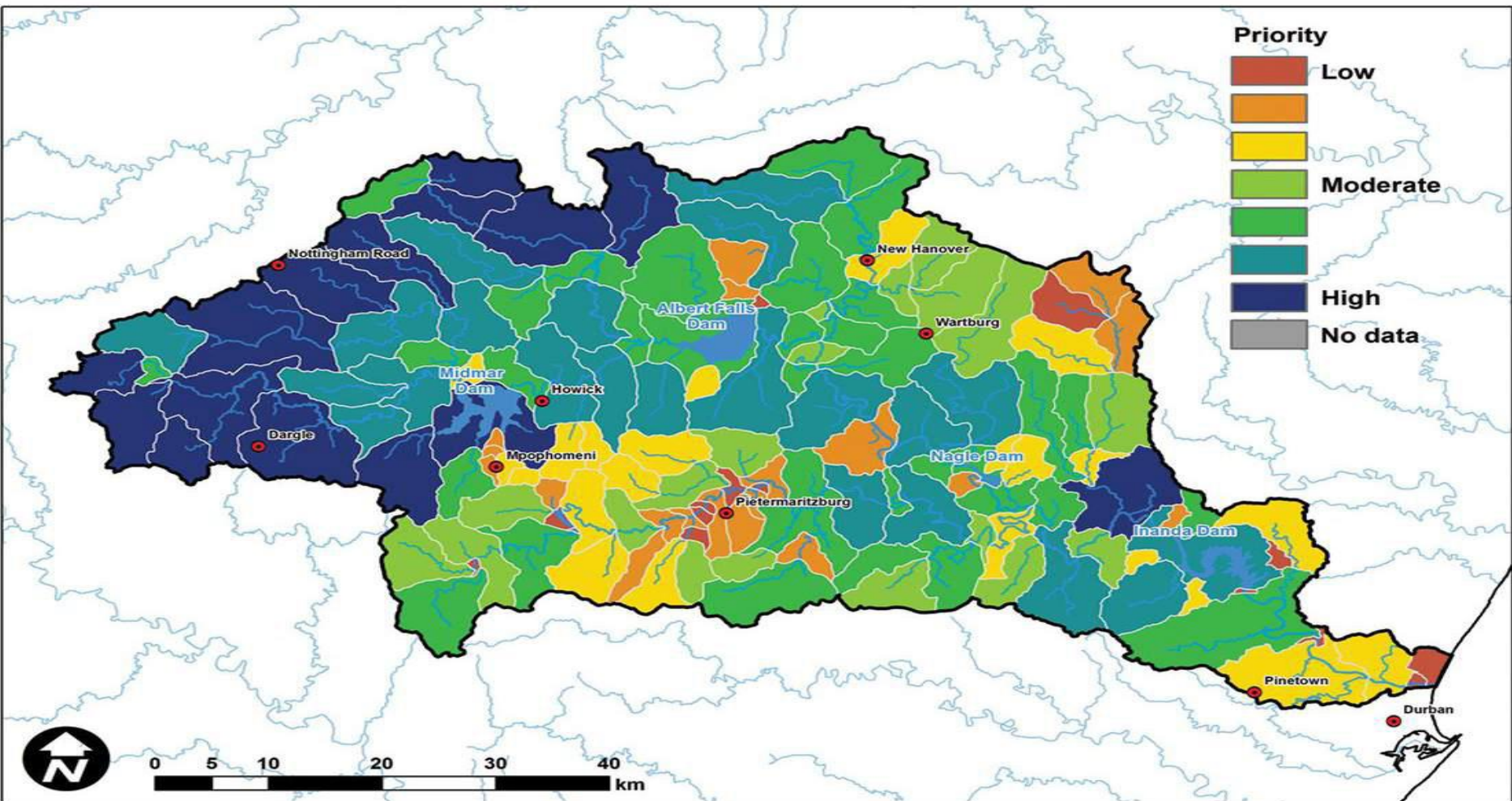


Figure 2: Priority catchments for securing natural vegetation to maintain streamflow, dry-season baseflow and sediment retention.

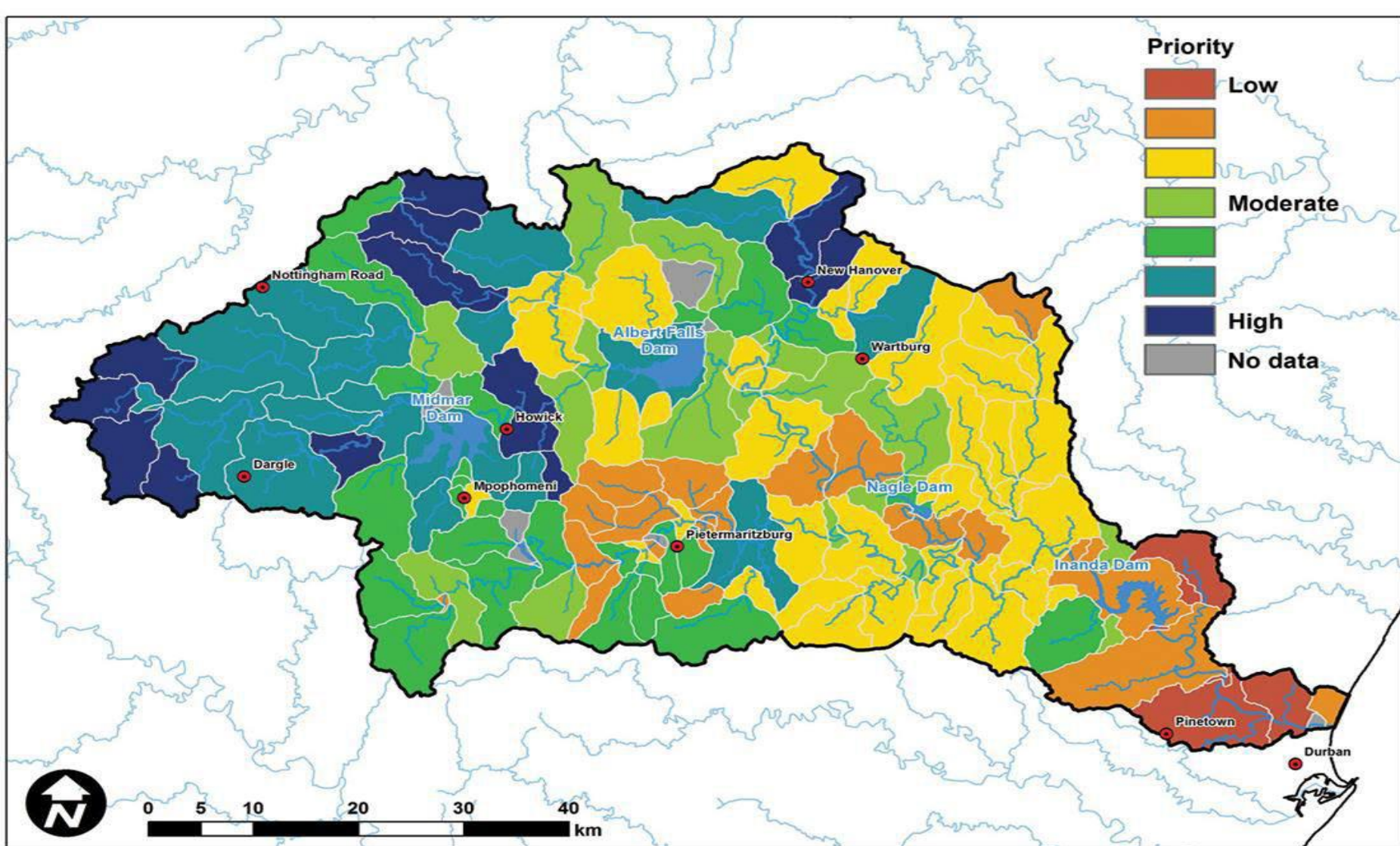


Figure 3: Priority catchments for rehabilitation of degraded vegetation and removal of invasive alien wattle to improve streamflow, dry-season baseflow and sediment retention



Stakeholder involvement :securing buy-in from industry, business and agriculture



IMPROVING WATER SECURITY

- Improved water quality and quantity monitoring.
- Improved governance – collaborative, coordinated water governance for effective, integrated outcomes.
- Science into action.

THANK YOU

